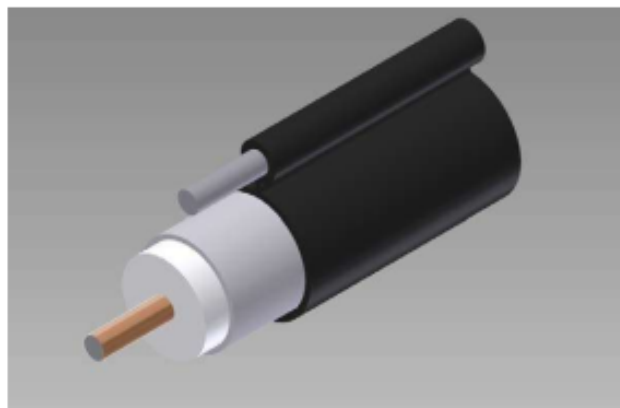


Coaxil .500 Con Portante TFC 100% USA



TFC Coaxial Cable Product Information Sheet
Type: T10500MS / 109 MESS

500 Series Coaxial Cable
Copper Clad Aluminum Conductor
Foamed Polyethylene Dielectric
Seamless Aluminum Tube Outer Conductor
Medium Density Polyethylene Jacket
0.109" Aluminum Clad Steel Messenger



DESCRIPCION

.500 P3 Con Portante

MODELO

T10500MS/109

CODIGO WT

4081303

Casa Central

Domingo French 831, B1603BNI, Villa Martelli, BS AS, Argentina
Tel:(54) 011-4709-6650
ventas@wiretechsa.com.ar

Sucursal Córdoba

Diaguitas 3138, Córdoba, CP 5008, Argentina
Te:(54) 0351 476-1313 – 0908
sucursalcordoba@wiretechsa.com.ar

1 – Información Mecánica

Cable Ordering Information

Part Number	Description	NEC / CSA Listing
750500MS00BK07000001	T10500MS / 109 MESS	n/a

Characteristics

Material	Detail	inches	mm
Inner Conductor	Copper Clad Aluminum	0.109	2.77
Dielectric	Foamed Polyethylene	0.450	11.4
Outer Conductor	Seamless Aluminum Tube	0.500	12.7
Floodant	---	---	---
Jacket	Polyethylene, Outdoor, Black	0.560	14.2
Messenger	Galvanized Steel	0.109	2.77
Cable Width	---	0.855	21.7

Mechanical Specifications

Minimum Bend Radius, in. (mm)		3.5	(89)
Product Weight, lbs/kft (kg/km)	(less reel)	144	(214)

2 – Parámetros Eléctricos

Electrical Specifications

Impedance, Ω	75 \pm 2	
Velocity of Propagation, %	87	
Capacitance, Nominal	15.6 pF/ft	51.2 pF/m
DC Resistance	Ω / kft	Ω / km
Inner Conductor	1.34	4.40
Outer Conductor	0.36	1.18
Loop	1.70	5.58

Notes:

Attenuation, Maximum @ 68 °F (20 °C)

Frequency, MHz	dB / 100 ft	dB / 100 m
5	0.16	0.52
55	0.55	1.80
211	1.08	3.55
250	1.19	3.92
270	1.24	4.07
300	1.31	4.30
330	1.38	4.54
350	1.43	4.69
400	1.53	5.02
450	1.63	5.35
500	1.73	5.68
550	1.82	5.97
600	1.91	6.27
750	2.16	7.09
870	2.35	7.69
1000	2.53	8.30