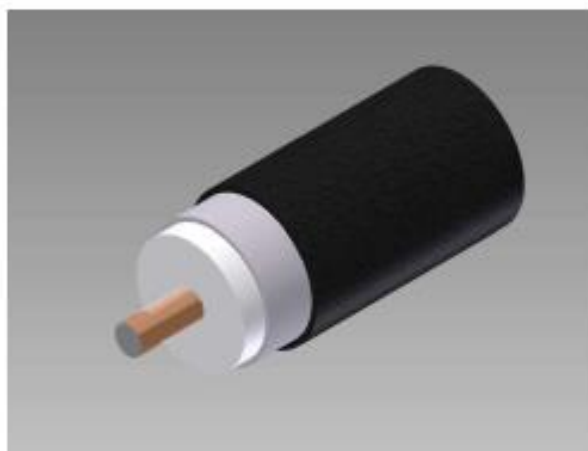


Coaxil .500 Sin Portante TFC 100% USA

Amphenol
Broadband Solutions

ABS Coaxial Cable Product Information Sheet
Type: T10500J

500 Series Coaxial Cable
Copper Clad Aluminum Conductor
Foamed Polyethylene Dielectric
Seamless Aluminum Tube Outer Conductor
Medium Density Polyethylene Jacket



DESCRIPCION

.500 P3 Sin portante

MODELO

T10500J

CODIGO WT

4081300

Casa Central

Domingo French 831, B1603BNI, Villa Martelli, BS AS, Argentina
Tel:(54) 011-4709-6650
ventas@wiretechsa.com.ar

Sucursal Córdoba

Diaguitas 3138, Córdoba, CP 5008, Argentina
Te:(54) 0351 476-1313 – 0908
sucursalcordoba@wiretechsa.com.ar

1 – Información Mecánica

Cable Ordering Information

Part Number	Description	NEC / CE Listing
750500J000BK00100001	T10500J	

Characteristics

Material	Detail	inches	mm
Inner Conductor	Copper Clad Aluminum	0.109	2.77
Dielectric	Foamed Polyethylene	0.450	11.4
Outer Conductor	Seamless Aluminum Tube	0.500	12.7
Floodant	---	---	---
Jacket	Polyethylene, Outdoor, Black	0.560	14.2
Messenger	---	---	---
Cable Width	---	---	---
	---	---	---
	---	---	---

Mechanical Specifications

Minimum Bend Radius, in. (mm)		3.5	(89)
Product Weight	(less reel)	95	(141)

2 – Parámetros Eléctricos

Electrical Specifications

Impedance, Ω	75 \pm 2	
Velocity of Propagation, %	87	
Capacitance, Nominal	15.6 pF/ft	51.2 pF/m
DC Resistance	Ω / kft	Ω / km
Inner Conductor	1.34	4.40
Outer Conductor	0.36	1.18
Loop	1.70	5.58

Structural Return Loss

MHz		dB
5-1002		-30

Attenuation, Maximum @ 68 °F (20 °C)

Frequency, MHz	dB / 100 ft	dB / 100 m
5	0.16	0.52
55	0.55	1.80
85	0.69	2.26
211	1.08	3.55
250	1.19	3.92
270	1.24	4.07
300	1.31	4.30
330	1.38	4.54
350	1.43	4.69
400	1.53	5.02
450	1.63	5.35
500	1.73	5.68
550	1.82	5.97
600	1.91	6.27
750	2.16	7.09
870	2.35	7.69
1002	2.53	8.30
1100	2.67	8.76
1200	2.80	9.19
1218	2.82	9.25
1300	2.93	9.61
1400	3.05	10.01
1500	3.17	10.40
1600	3.28	10.76
1700	3.40	11.15
1794	3.50	11.48
1800	3.51	11.52
2000	3.72	12.20
2200	3.93	12.89
2400	4.12	13.52
2600	4.32	14.17
2800	4.50	14.76
3000	4.68	15.35